

### SERVICE MANUAL DOCUMENTATION TECHNIQUE TECHNISCHE DOKUMENTATION DOCUMENTAZIONE TECNICA DOCUMENTACION TECNICA

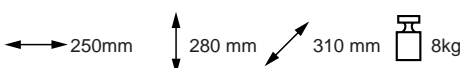

## CS600 / CS600B CS700 / CS700B / CS700U

Version (PC\*): A / B

\*PC: The version code is indicated either in the battery compartment or on the back of the unit - ce code version est indiqué dans le compartiment à piles ou au dos de l'appareil - PC: Version des Geräts wird im Batteriefach oder auf der Rückseite angegeben - il codice della versione è indicato nello scompartimento delle batterie o sul retro dell'apparecchio - el código de la versión está indicado en el compartimento de las pilas o en la parte trasera del aparato.



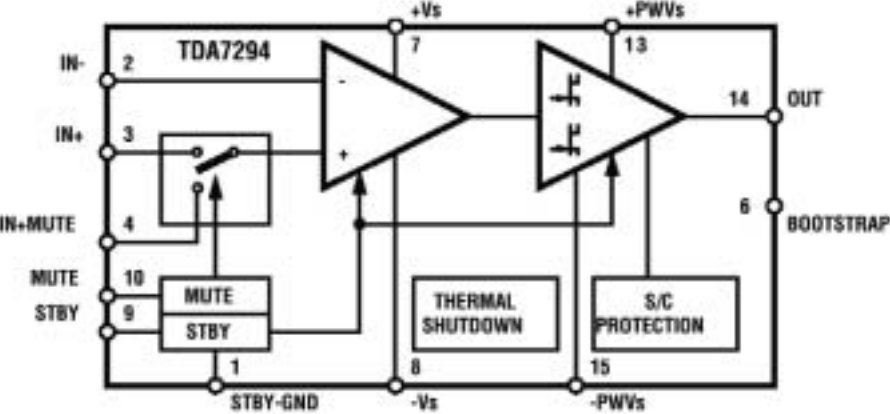
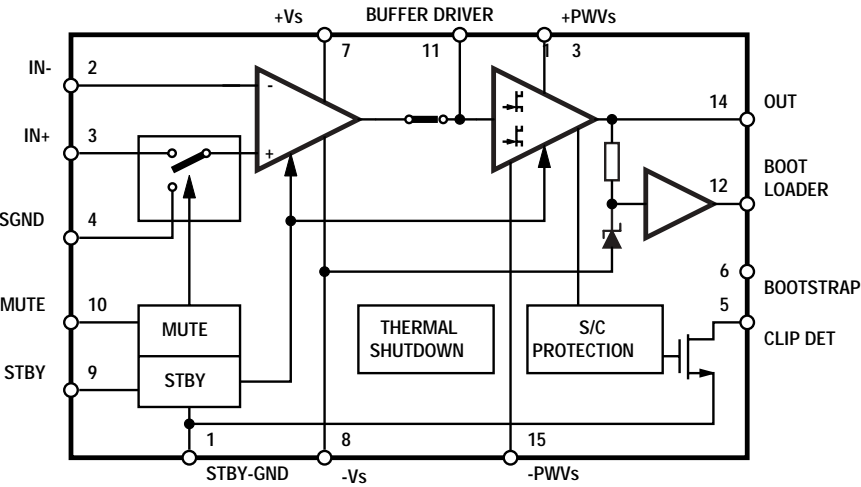
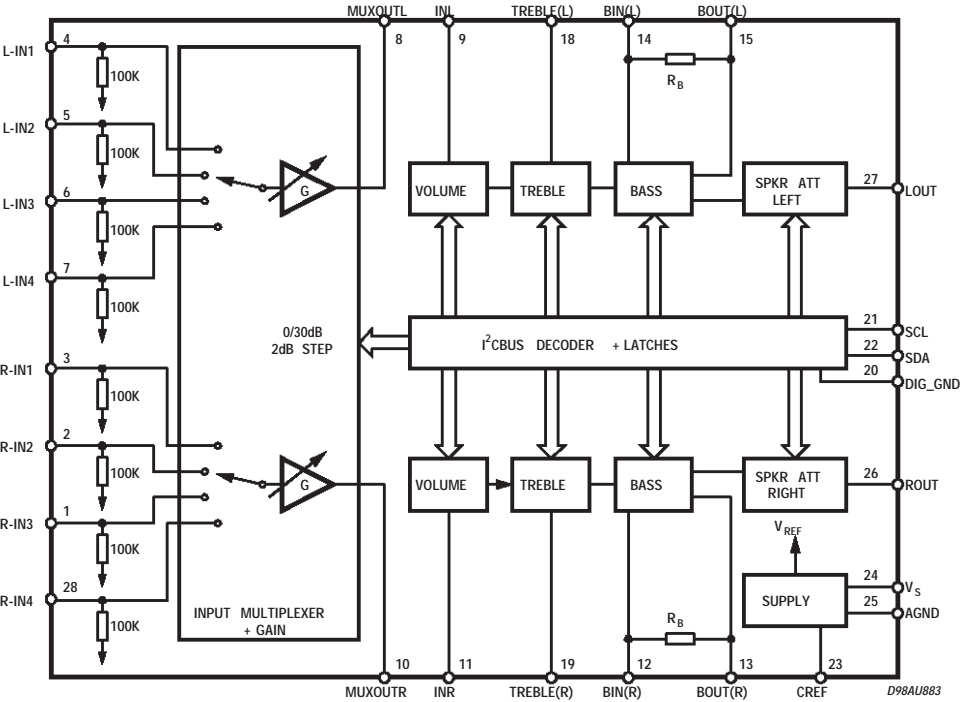
### Technical data - Caractéristiques principales Technische Daten - Dati tecnici - Características del aparato

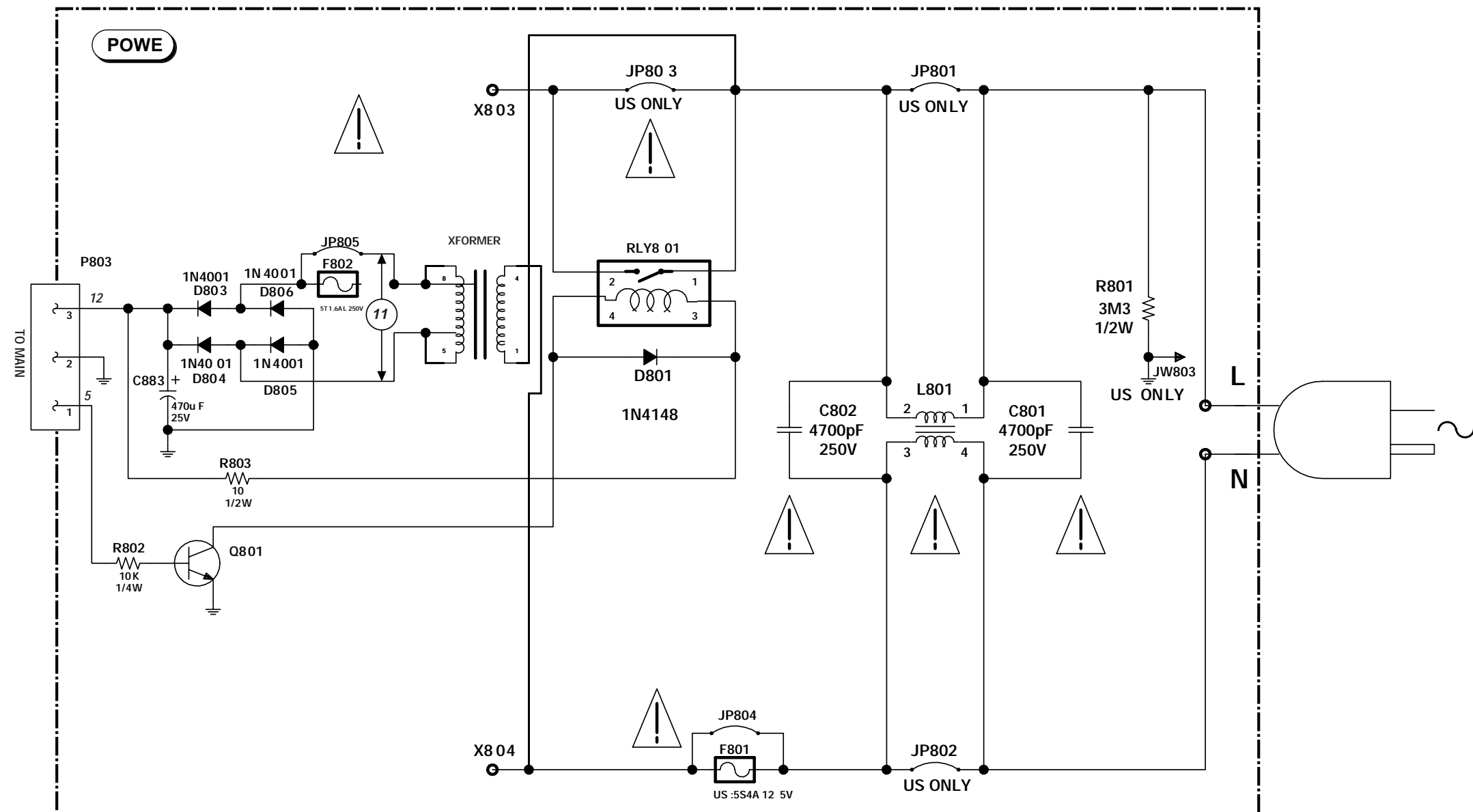
<b>Type of set:</b> Two-in-one horizontale combination/DAD <b>Type d'appareil:</b> Ensemble compact stéréophonique <b>Geräteart:</b> DAD-2er Horizontal Kompaktanlage <b>Tipo d'apparecchio:</b> Compatto Hifi/CD <b>Tipo de aparato:</b> Equipo compacto estereofónico/DAD			
<b>Power supply:</b> <b>Alimentation:</b> 230 V ~ 50Hz <b>Stromversorgung:</b> <b>Alimentazione:</b> <b>Alimentación:</b>		<b>Nominal output power:</b> <b>Puissance nominale de sortie:</b> 2 x 70W (rms) <b>Nennausgangsleistung:</b> 2 x 150W (music) <b>Potenza nominale di uscita:</b> <b>Potencia nominal de salida:</b>	
	<b>FM - MF:</b> 87.5 - 108 MHz <b>MW - PO:</b> 522 - 1611 kHz <b>LW - GO:</b> 150 - 283 kHz	<b>Sensitivity:</b> <b>Sensibilité:</b> FM - MF: 48µV (S/N = 50 dB) <b>Empfindlichkeit:</b> MW - PO: 1000µV/m (S/N = 20 dB) <b>Sensibilità:</b> LW - GO: 2500µV/m (S/N = 20 dB) <b>Sensibilidad:</b>	
	<b>Disc rotation speed:</b> <b>Vitesse de rotation du disque:</b> <b>CD-Drehgeschwindigkeit:</b> 200 → 500 tr/mn <b>Velocità di rotazione del disco:</b> <b>Velocidad de rotación del disco:</b>	<b>Frequency response:</b> <b>Courbe de réponse:</b> 60 Hz - 16 kHz <b>Frequenzgang:</b> <b>Curva di risposta:</b> (-3 dB) <b>Curva de respuesta:</b>	
<b>DAD</b> <b>Stereo separation :</b> <b>Diaphonie :</b> 40 dB <b>Übersprechdämpfung :</b> <b>Diafonia :</b> <b>Diafonia :</b>		<b>Signal to noise ratio:</b> <b>Rapport signal / bruit:</b> 60 dB <b>Geräuschspannungabstand:</b> <b>Rapporto segnale / disturbo:</b> <b>Relación señal / ruido:</b>	



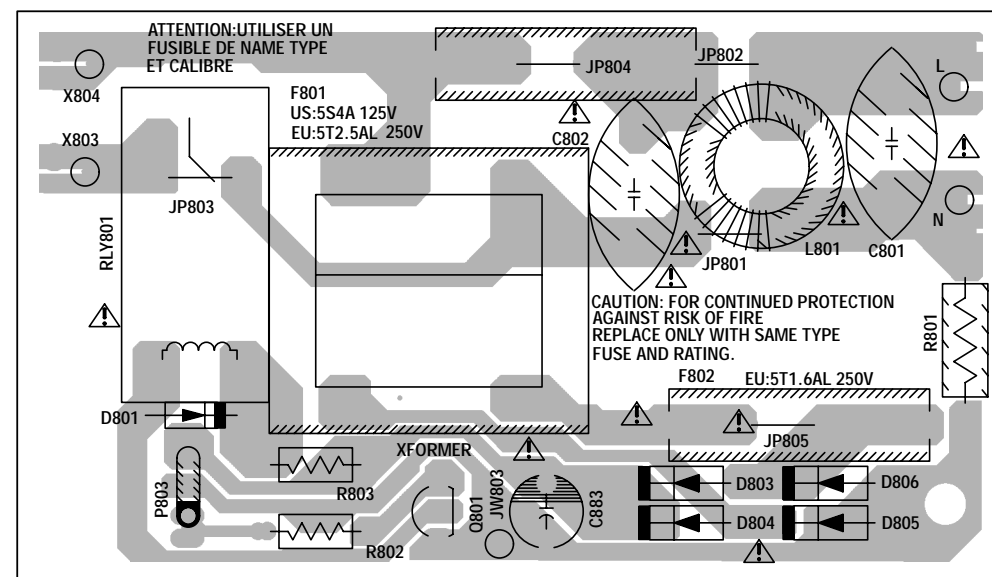
**WARNING :** Before servicing this chassis read the safety recommendations.  
**ATTENTION :** Avant toute intervention sur ce châssis, lire les recommandations de sécurité.  
**ACHTUNG :** Vor jedem Eingriff auf diesem Chassis, die Sicherheitsvorschriften lesen.  
**ATTENZIONE :** Prima di intervenire sullo chassis, leggere le norme di sicurezza.  
**IMPORTANTE :** Antes de cualquier intervención, leer las recomendaciones de seguridad.

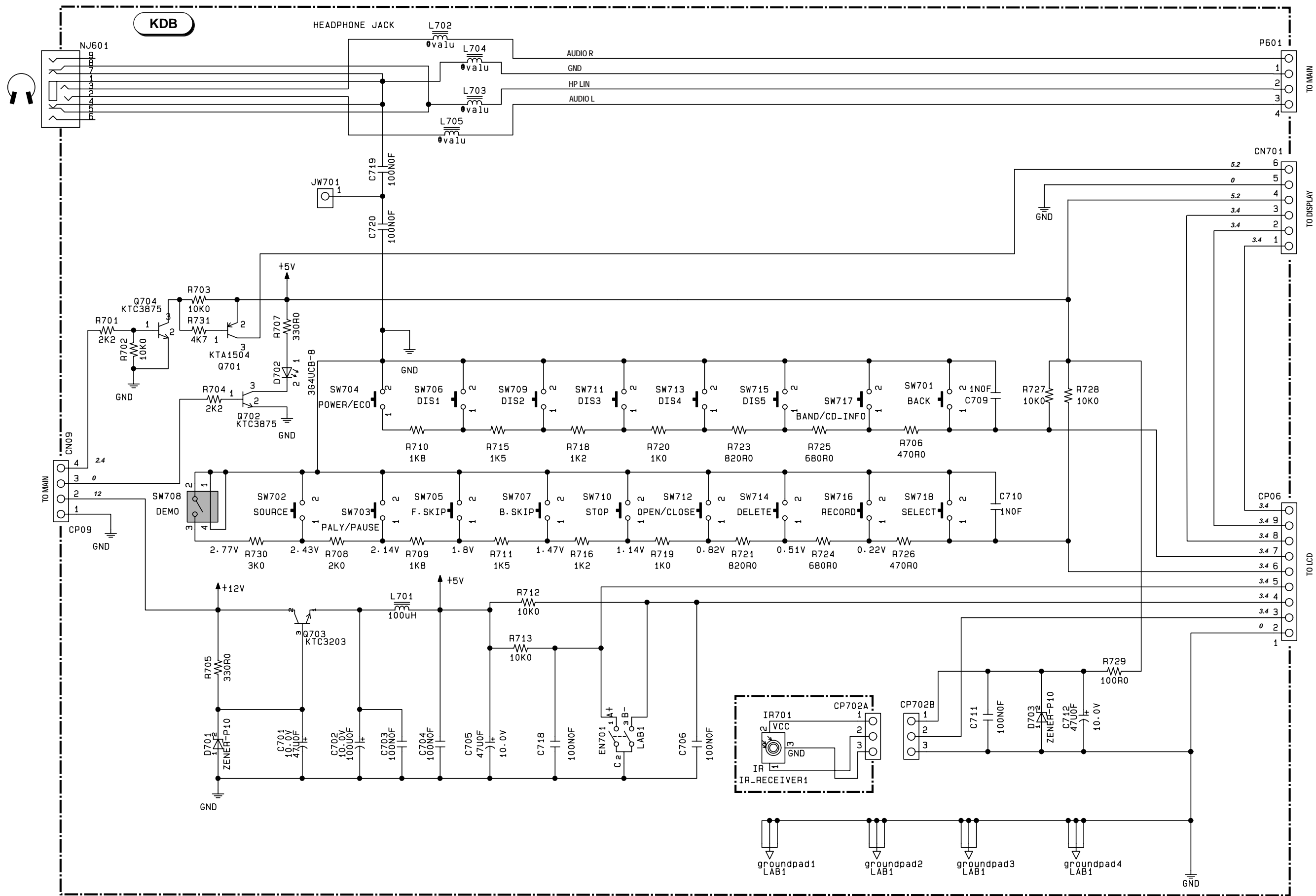
0805 - CRKD2154 - CRKD2155

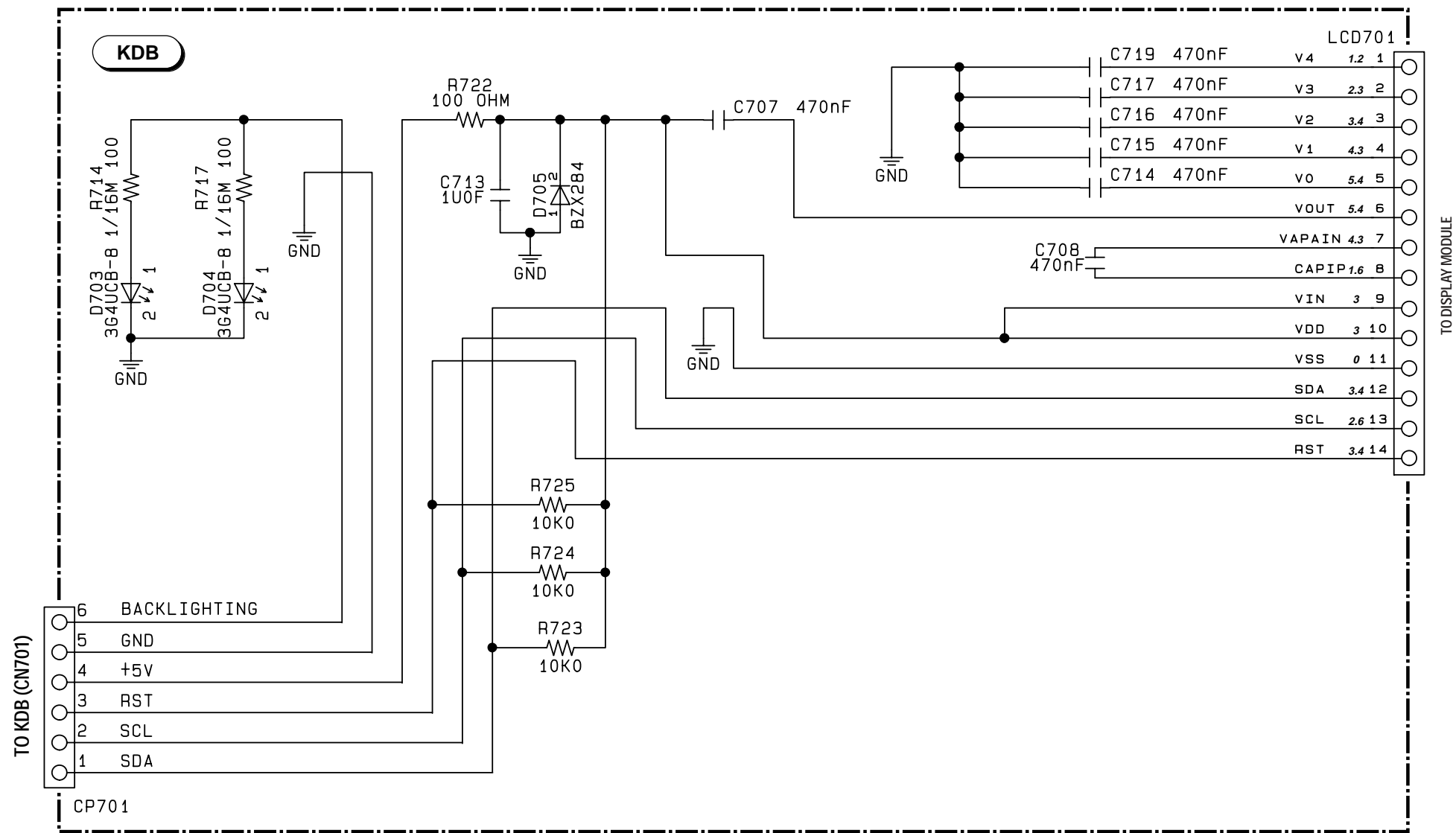




**Power unit P.C.B.**  
**Platine secteur**  
**Ltpl. Netzanschluss**  
**Piastra di rete**  
**Platina de red**



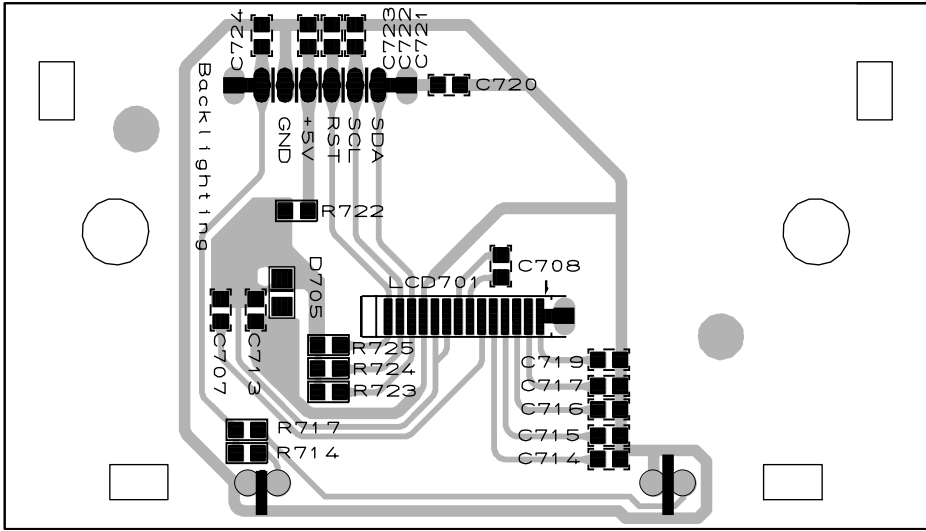
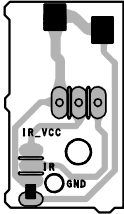
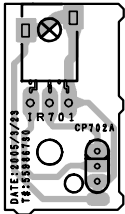
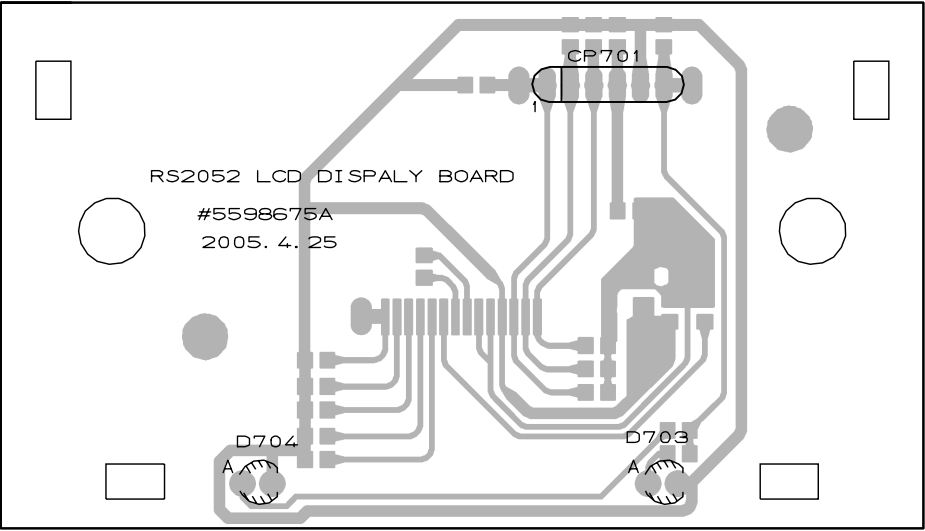




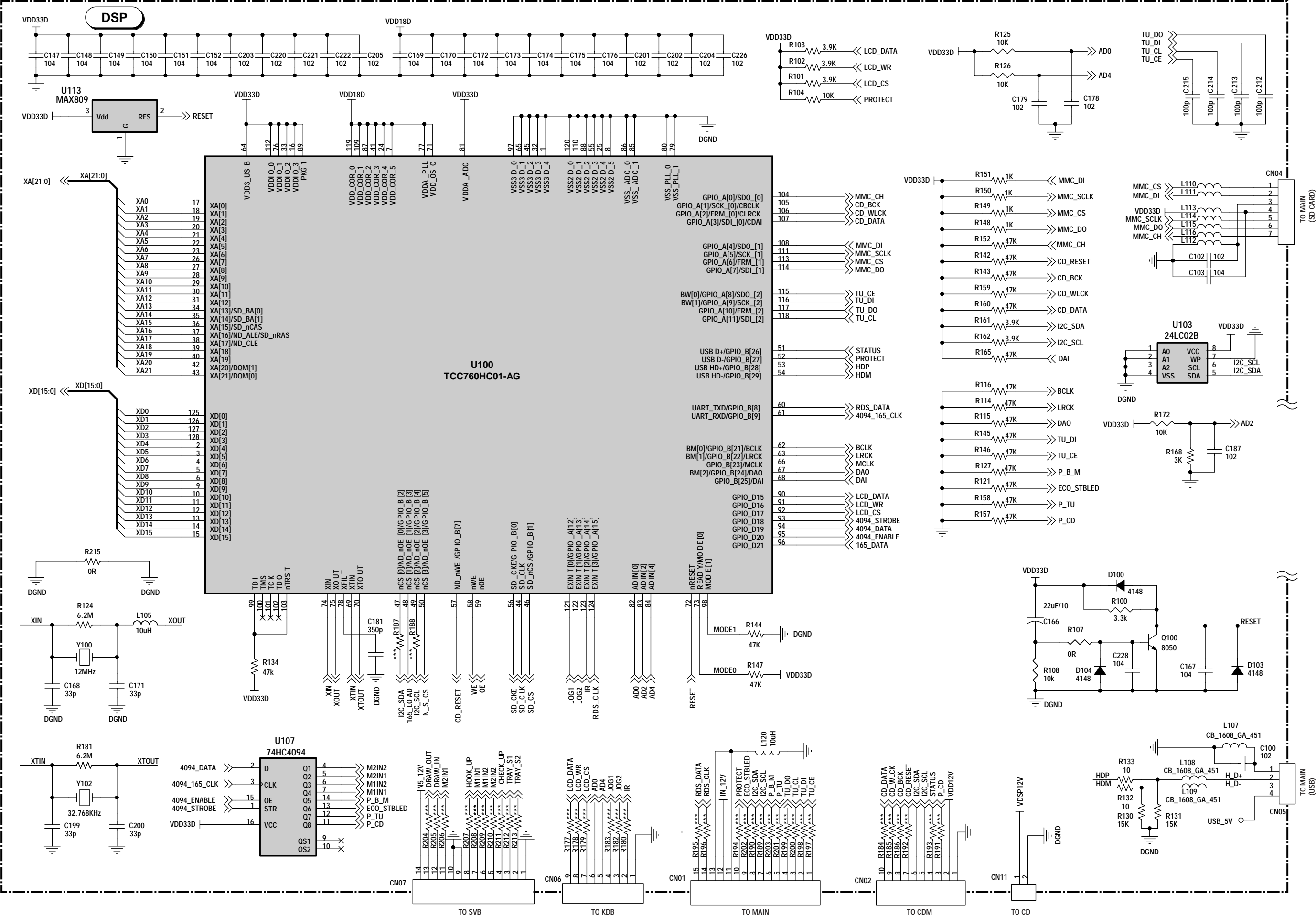
Display P.C.B.  
 Platine afficheur  
 Ltpl. Anzeige  
 Piastra indicatore  
 Platina indicador

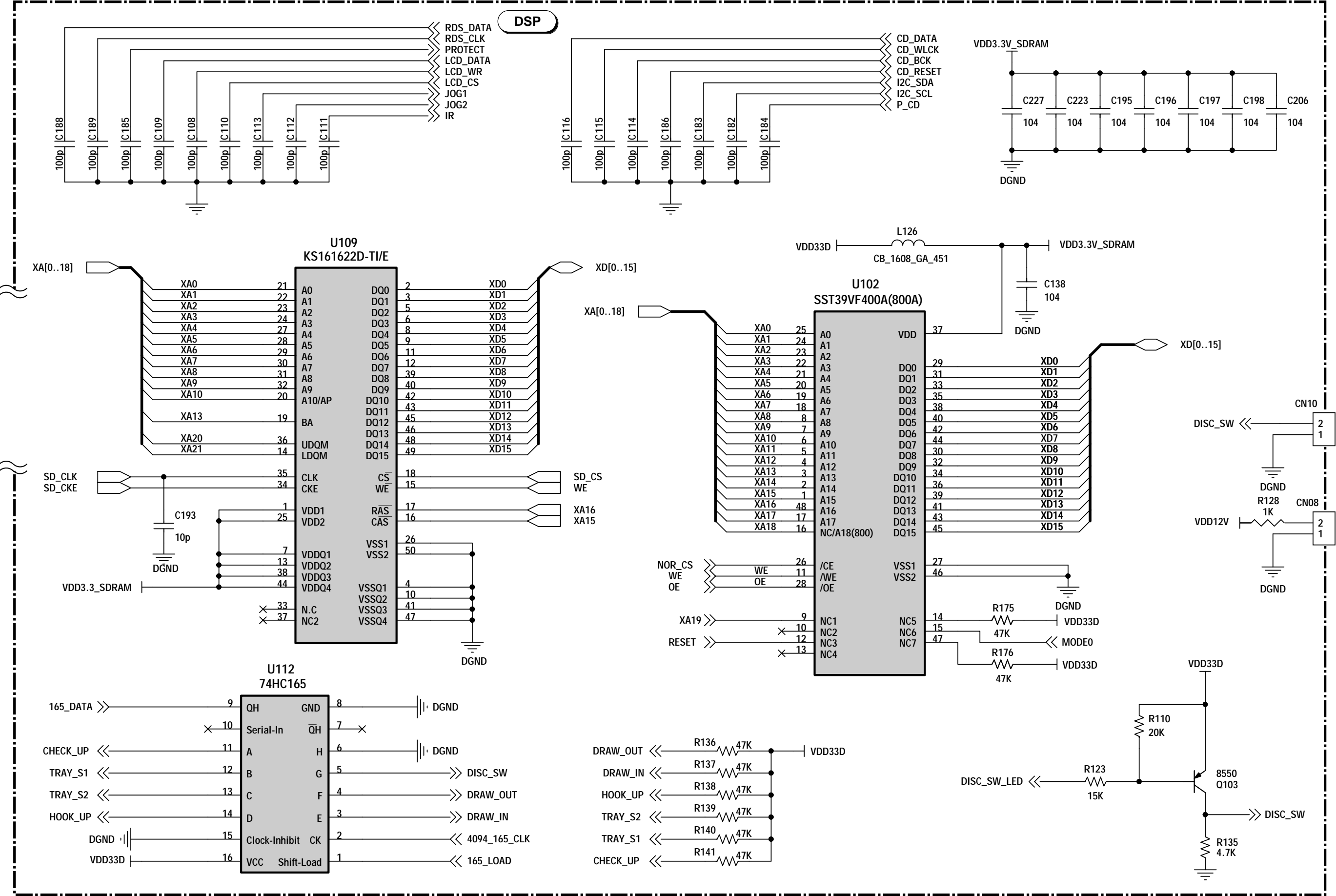
Component side  
 Côté composants  
 Bestückungsseite  
 Lato componenti  
 Lado componentes

Solder side  
 Côté soudure  
 Lötseite  
 Lato saldature  
 Lado del cobre

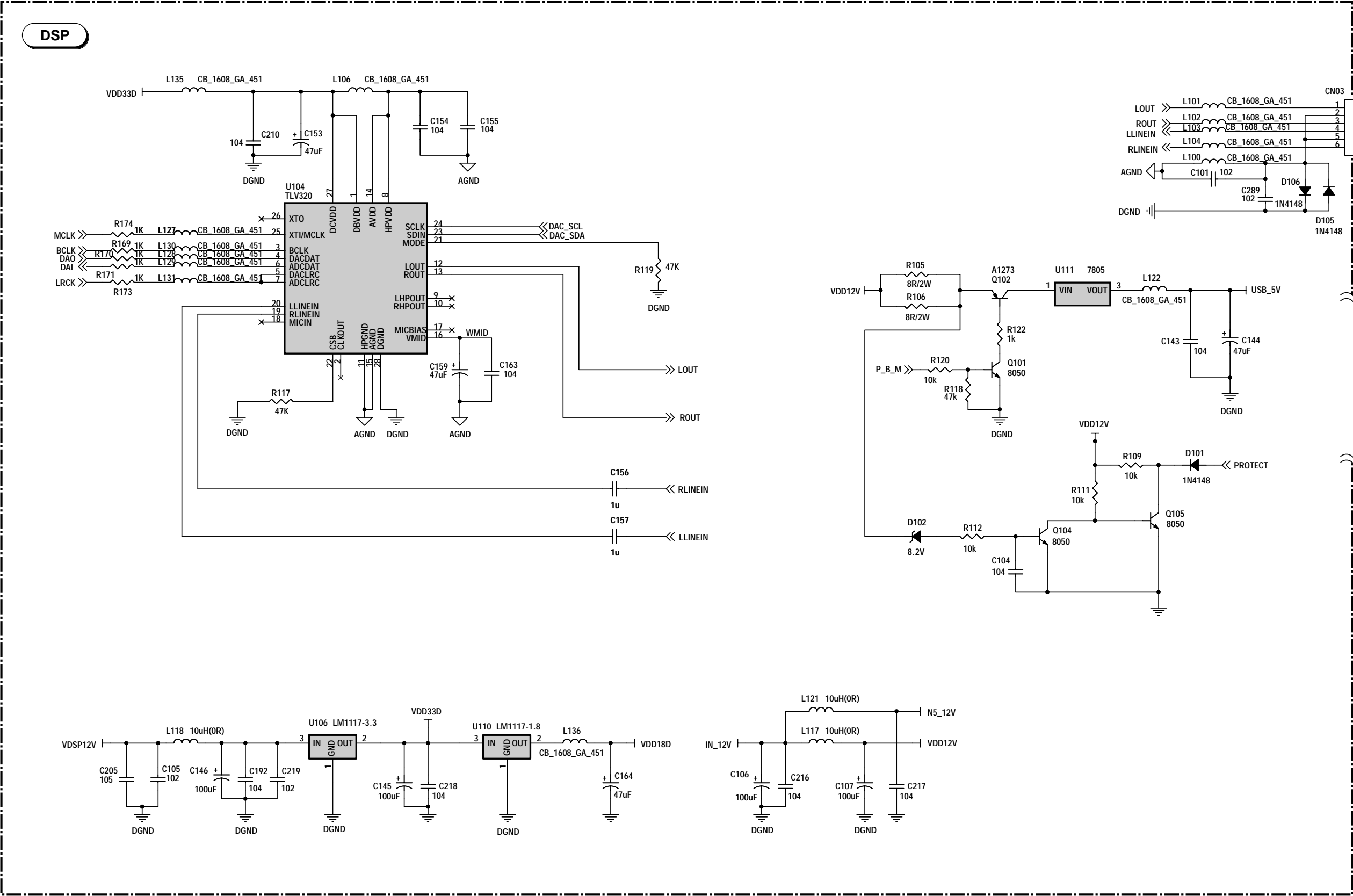


DIGITAL PROCESSING SCHEMATIC DIAGRAM - SCHEMA DU TRAITEMENT DIGITAL - SCHALTBILD DIGITALVERARBEITUNG - SCHEMA ELABORAZIONE DIGITALE  
ESQUEMA DEL TRATAMIENTO DIGITAL (1/3)



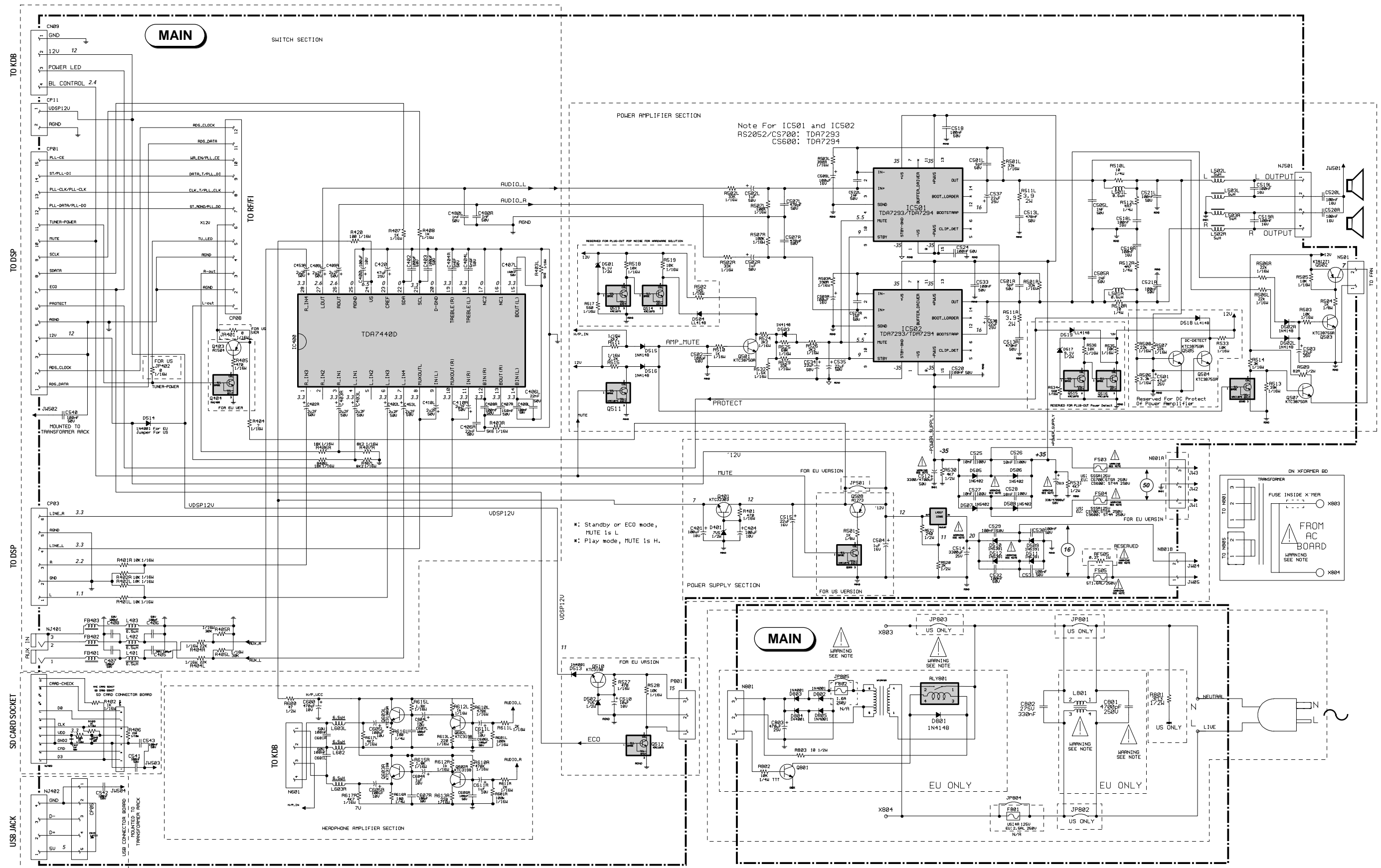




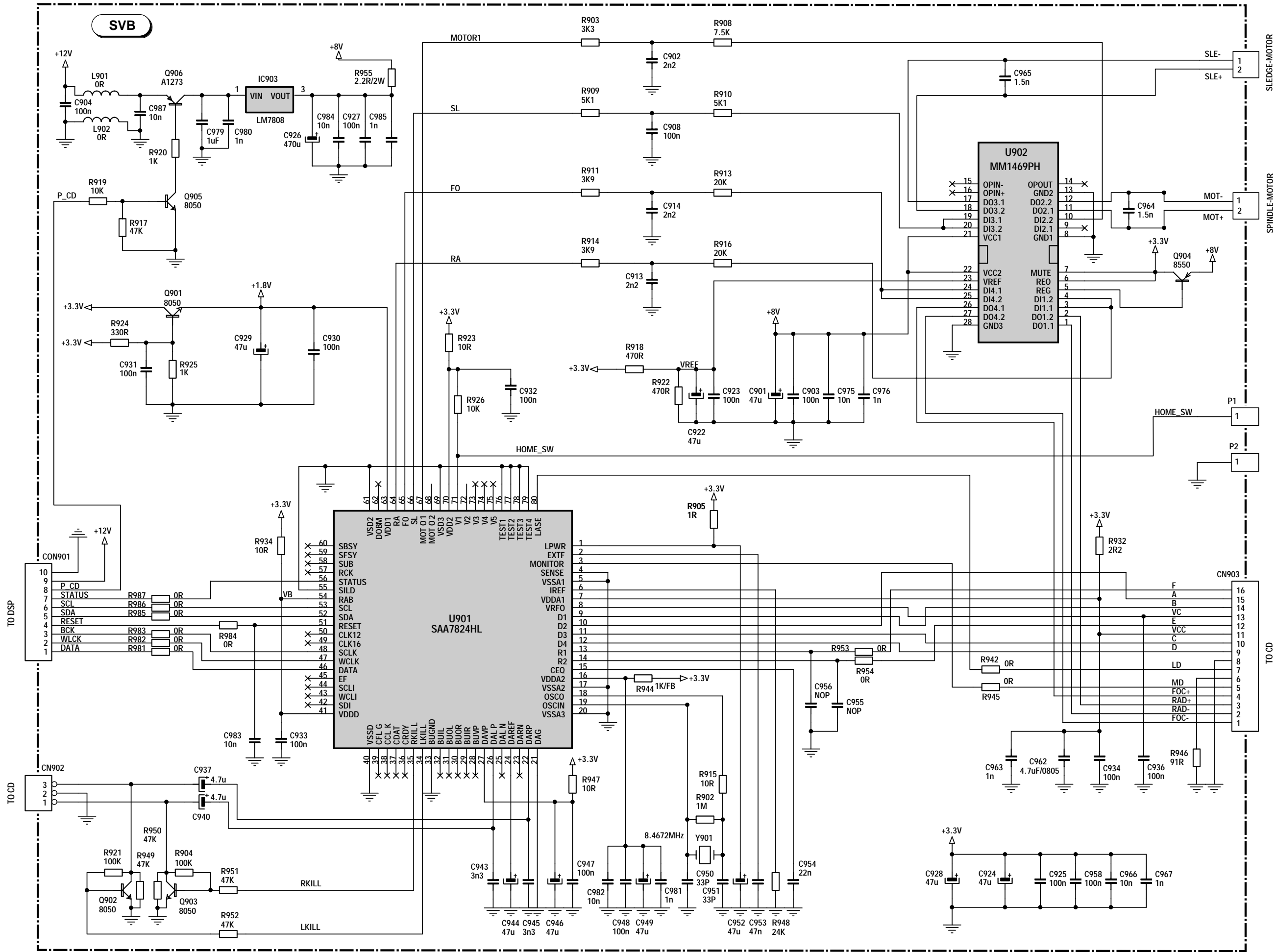




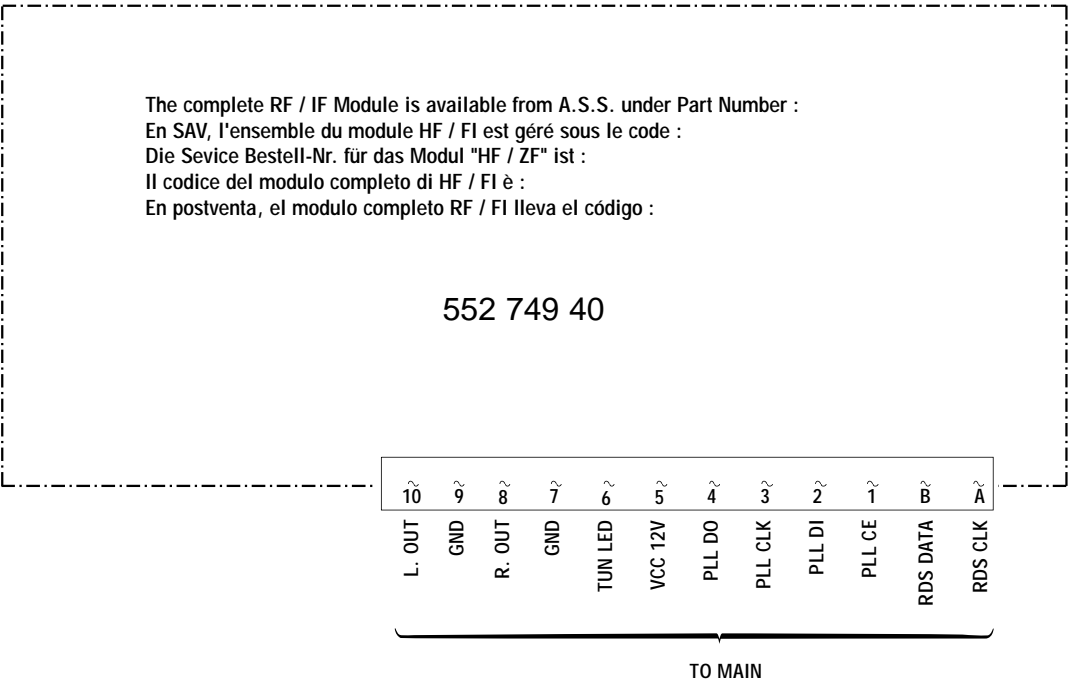
**MAIN SCHEMATIC DIAGRAM - SCHEMA DE LA PLATINE PRINCIPALE - SCHALTBILD GRUNDPLATTE - SCHEMA DELLA PIASTRA PRINCIPALE - ESQUEMA DE LA PLATINA PRINCIPAL**



MICROCONTROLLER SCHEMATIC DIAGRAM - SCHEMA DE LA PLATINE MICROCONTROLEUR - MICROCONTROLLER SCHALTBILD SCHEMA DELLA PIASTRA MICROPROCESSORE  
ESQUEMA DE LA PLATINA MICROCONTROLADOR



RF / IF SCHEMATIC DIAGRAM - SCHEMA HF / FI - SCHALTBILD HF / ZF  
SCHEMA HF / FI - ESQUEMA RF / FI



DIGITAL PROCESSING SCHEMATIC DIAGRAM - SCHEMA DU TRAITEMENT DIGITAL -  
SCHALTBILD DIGITALVERARBEITUNG - SCHEMA ELABORAZIONE DIGITALE  
ESQUEMA DEL TRATAMIENTO DIGITAL

